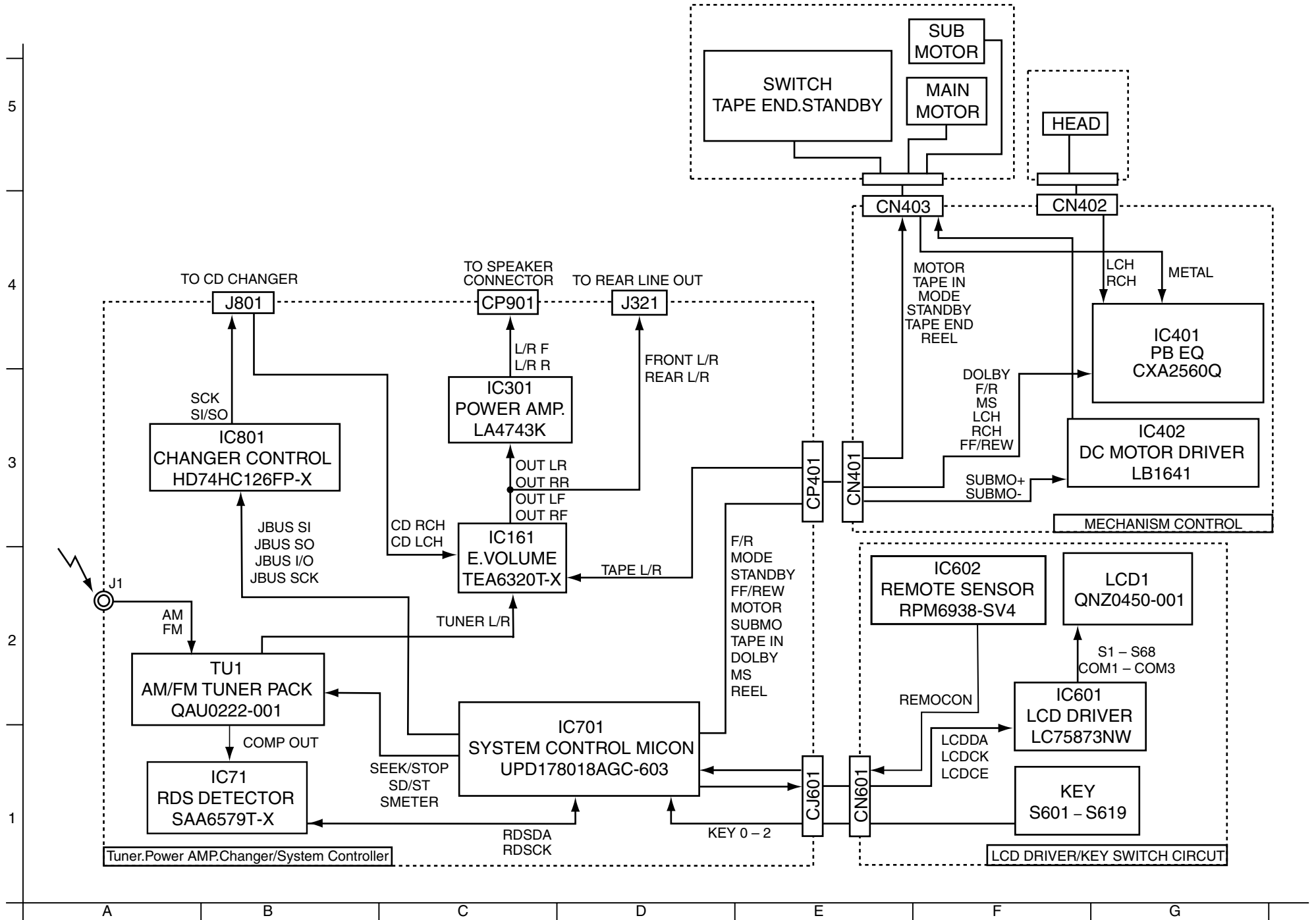


Block Diagram



< M E M O >

Receiver & System control circuit section

- CONDITION—FM
 1. VOLTAGES ARE DC-MEASURED WITH A DIGITAL VOLT METER WITHOUT INPUT SIGNAL.
 CONDITION—FM MODE: □ AM MODE
- UNLESS OTHERWISE SPECIFIED:
 ALL RESISTORS ARE 1/10W OR 1/4W ±5% METAL GLAZE RESISTOR.
 ALL CAPACITORS ARE 50V OR 25V CERAMIC CAPACITOR.
 ALL RESISTANCE VALUES ARE IN OHM.
 ALL CAPACITANCE VALUES ARE IN UF (P=PF)
 ALL CAPACITORS ARE SHOWN IN THE FORM OF CAPACITANCE(UF)/RATED VOLTAGE(V)
 TF — T. F. CAPACITOR
 Z — N. F. CAPACITOR

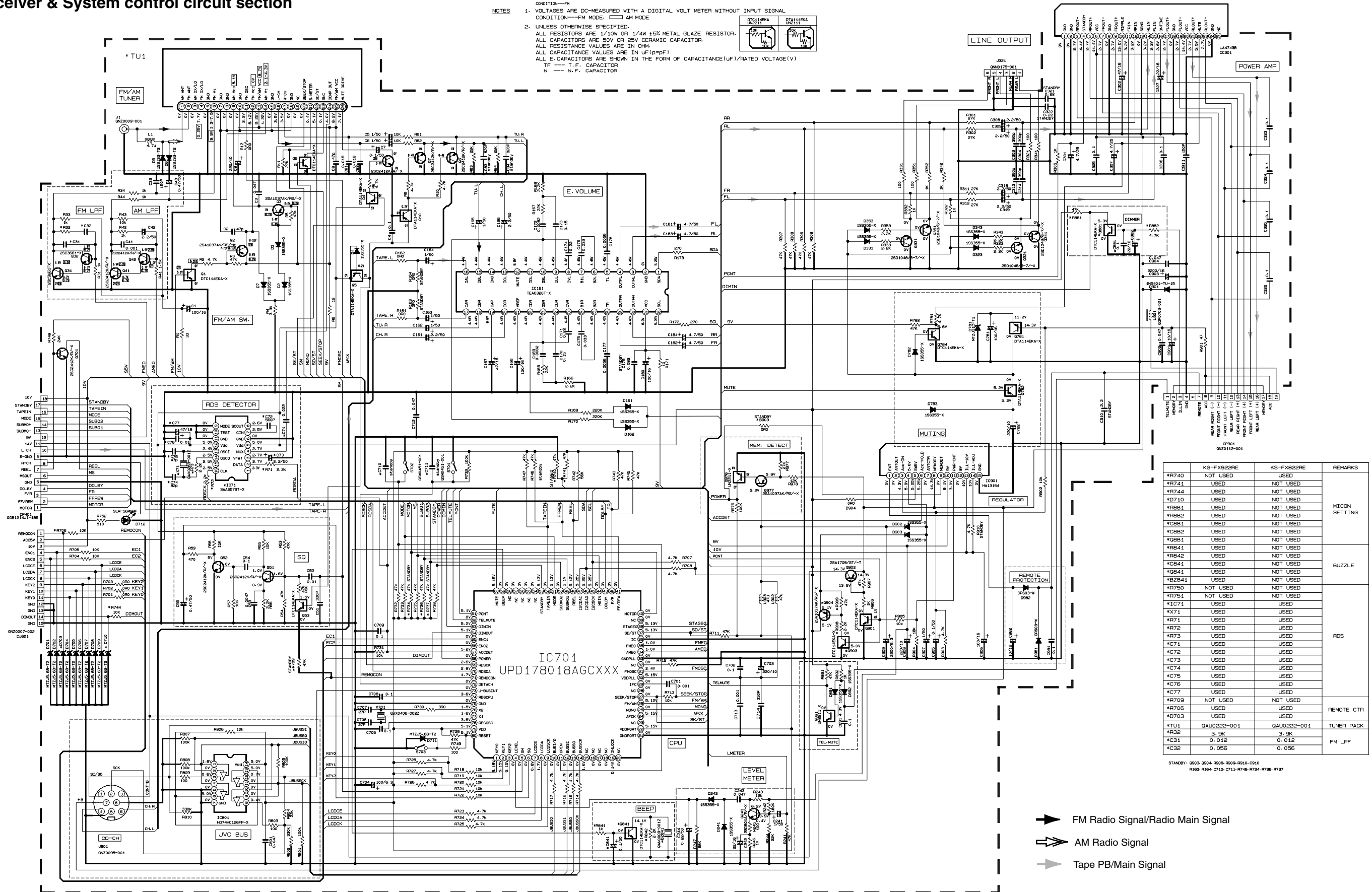
5

4

3

2

1



REF	KS-FX922R	KS-FX922R	REMARKS
*R740	NOT USED	USED	
*R741	USED	NOT USED	
*R744	USED	NOT USED	
*D710	USED	NOT USED	MICON SETTING
*R881	USED	NOT USED	
*R882	USED	NOT USED	
*C881	USED	NOT USED	
*C882	USED	NOT USED	
*Q881	USED	NOT USED	
*R841	USED	NOT USED	
*R842	USED	NOT USED	
*C841	USED	NOT USED	BUZZLE
*Q841	USED	NOT USED	
*R7841	USED	NOT USED	
*R780	NOT USED	NOT USED	
*R751	NOT USED	NOT USED	
*IC71	USED	USED	RDS
*X71	USED	USED	
*R71	USED	USED	
*R72	USED	USED	
*R73	USED	USED	
*C71	USED	USED	
*C72	USED	USED	
*C73	USED	USED	
*C74	USED	USED	
*C75	USED	USED	
*C76	USED	USED	
*C77	USED	USED	
*R709	NOT USED	NOT USED	
*R706	USED	USED	REMOTE CTR
*D703	USED	USED	
*TU1	GAU0222-001	GAU0222-001	TUNER PACK
*R32	3.9K	3.9K	
*C31	0.012	0.012	FM LFP
*C32	0.056	0.056	

STANBY: 0503-0504-R006-R009-R010-D-010
 R163-R164-C710-C711-R746-R734-R736-R737

- ➔ FM Radio Signal/Radio Main Signal
- ➔ AM Radio Signal
- ➔ Tape PB/Main Signal

■ Mecha control circuit section

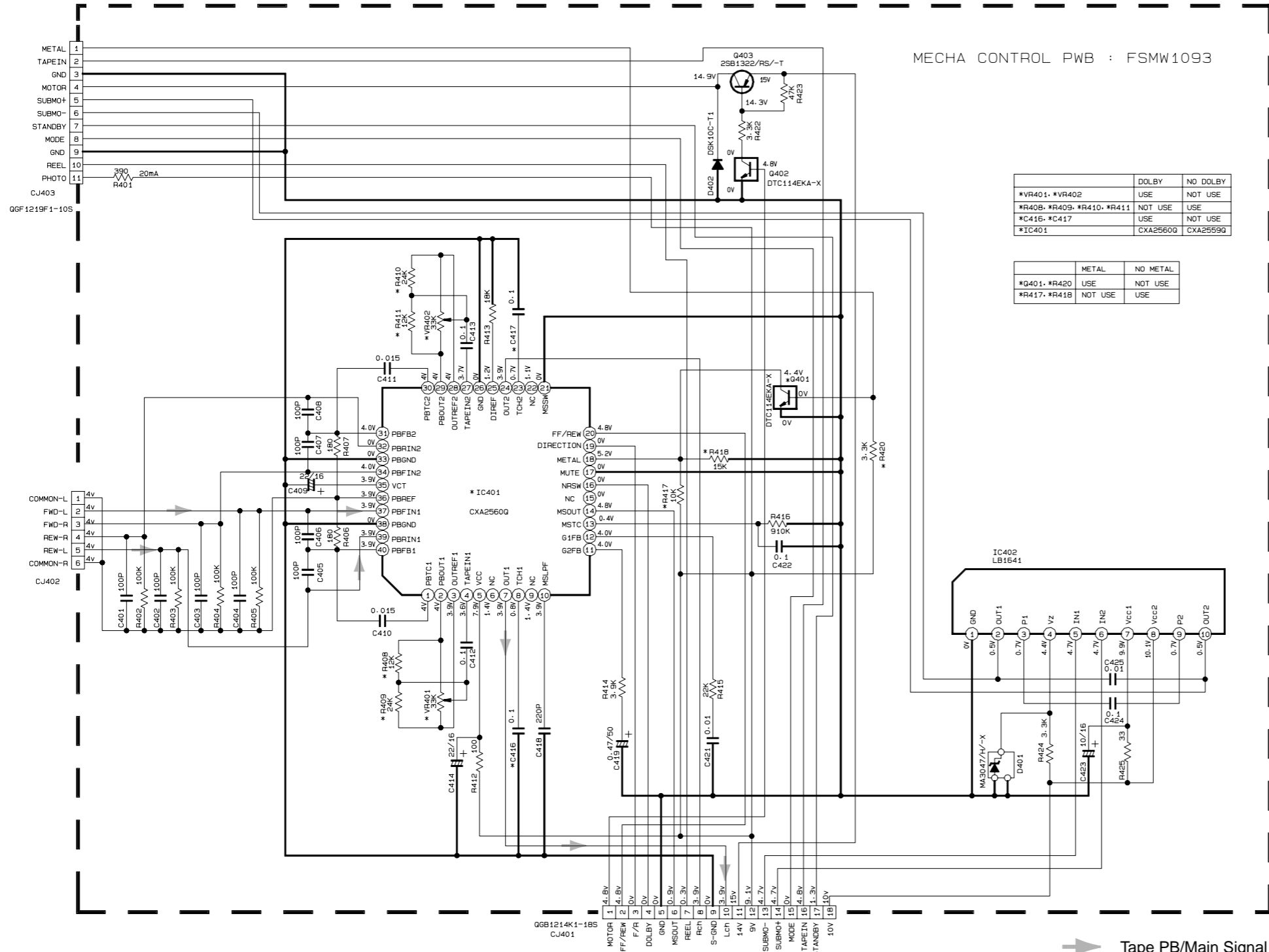
5

4

3

2

1



	DOLBY	NO DOLBY
*VR401, *VR402	USE	NOT USE
*R408, *R409, *R410, *R411	NOT USE	USE
*C416, *C417	USE	NOT USE
*IC401	CXA2560Q	CXA2559Q

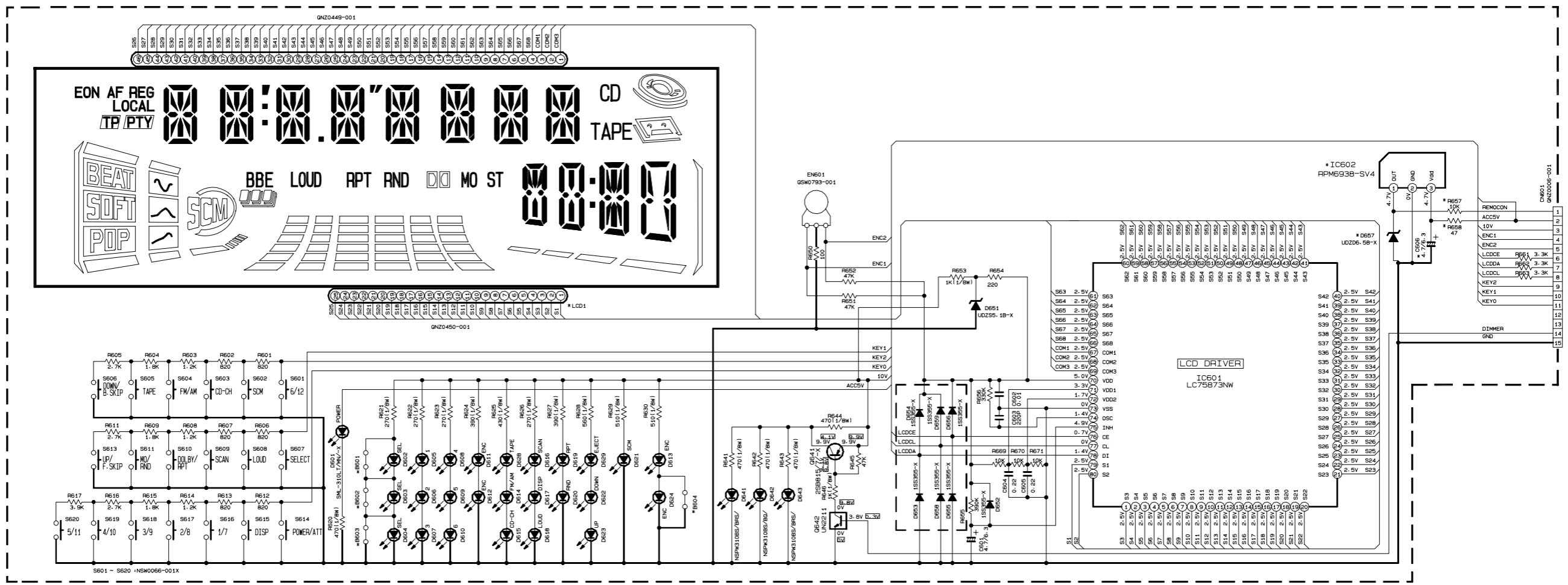
	METAL	NO METAL
*Q401, *R420	USE	NOT USE
*R417, *R418	NOT USE	USE

NOTES

- VOLTAGES ARE DC-MEASURED WITH A DIGITAL VOLT METER WITHOUT INPUT SIGNAL. CONDITION---TAPE MODE.
 - UNLESS OTHERWISE SPECIFIED.
 - ALL RESISTORS ARE 1/4W ±5% OR 1/10W ±5% METAL GLAZE RESISTOR.
 - ALL CAPACITORS ARE 50V CERAMIC CAPACITOR.
 - ALL RESISTANCE VALUES ARE IN OHM(Ω).
 - ALL CAPACITANCE VALUES ARE IN nF(pF).
 - ALL E. CAPACITORS ARE SHOWN IN THE FORM OF CAPACITANCE(nF)/RATED VOLTAGE(V)
- TF-----TF CAPACITOR

■LCD driver & Operation switch circuit section

	KS-FX922RE	KS-FX822RE
*LCD1	QLD0163-001	QLD0164-001
*D602, *D603, *D604, *D605, *D606, *D607, *D608, *D609, *D610, *D611, *D612, *D613, *D614, *D615, *D616, *D617, *D618, *D622, *D623, *D628, *D629	SML-310VT/JK/-X (RED)	SML-310VT/JK/-X (RED)
*D624	NOT USED	NOT USED
*D621	LNJ308G81/1-3/X	LNJ308G81/1-3/X
*D619, *D620	SML-310VT/JK/-X	SML-310VT/JK/-X
*D641, *D643	NSPW310BS/BRS/	NSPW310BS/BRS/
*D642	NSPW310BS/BQ/	NSPW310BS/BQ/
*R645, *R646	USED	NOT USED
*Q641, *Q642	USED	NOT USED
*R641, *R642, *R643	470	1K
*R644	470	0R0
*IC602	USED	USED
*D657	USED	USED
*C606	USED	USED
*R657, *R658	USED	USED
*B601, *B602, *B603	NOT USED	NOT USED



SWITCH PWB : GEB10013

Printed circuit boards

■ Main board

■ Front board
(Front side)

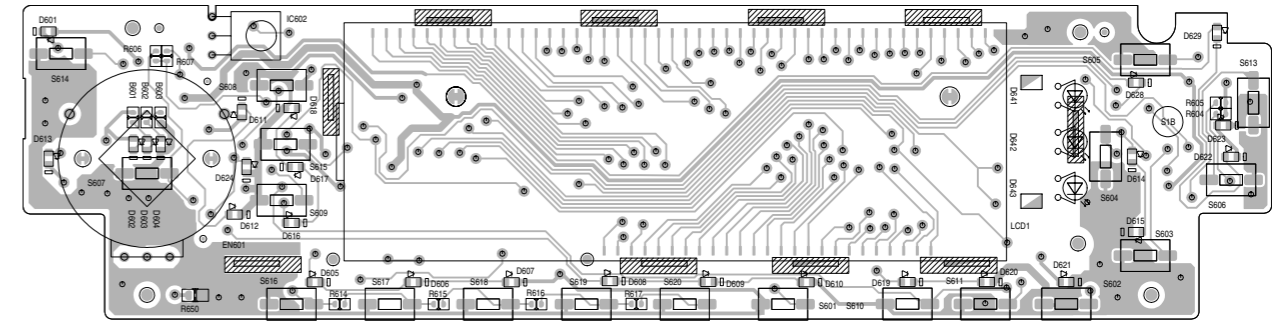
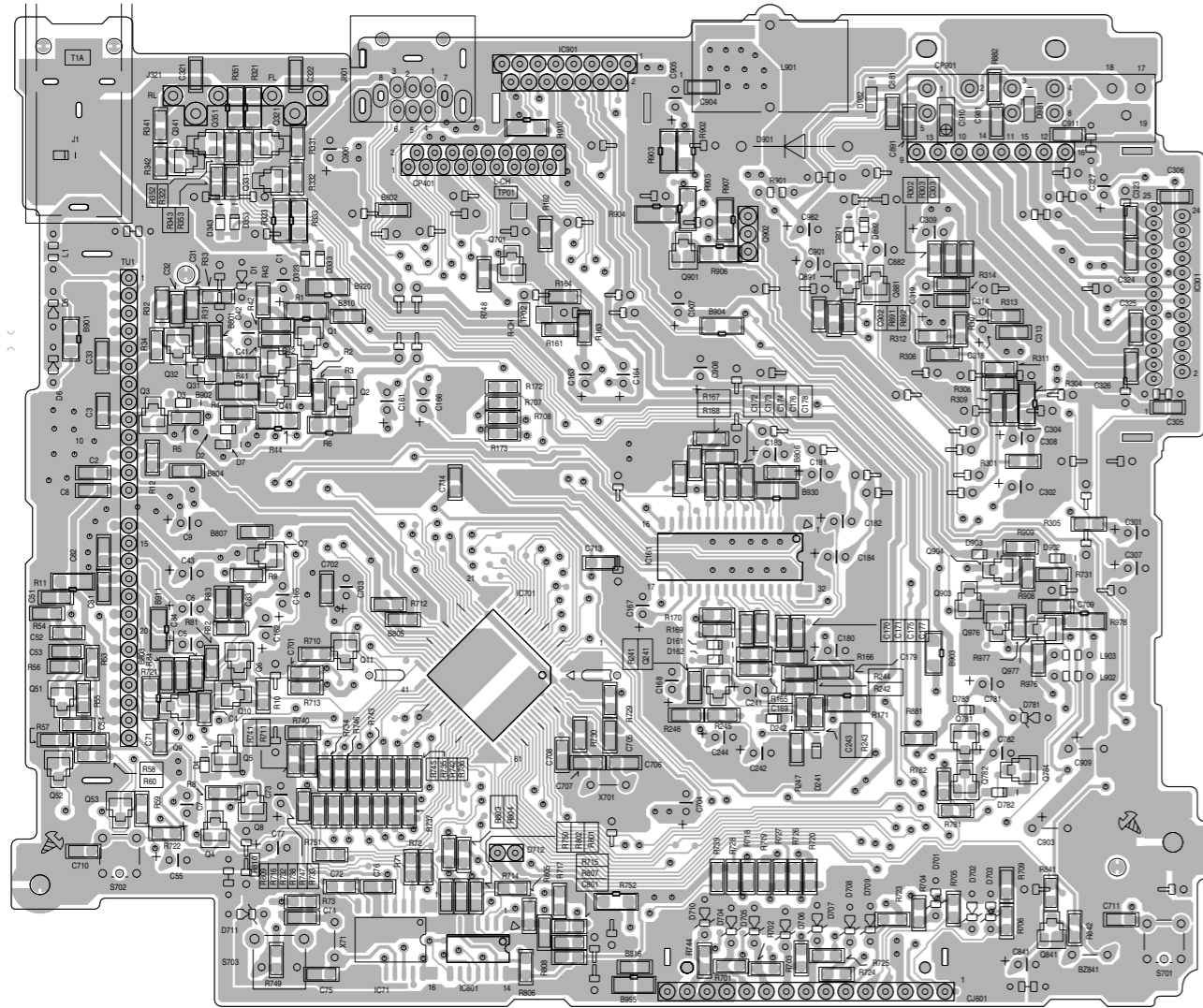
5

4

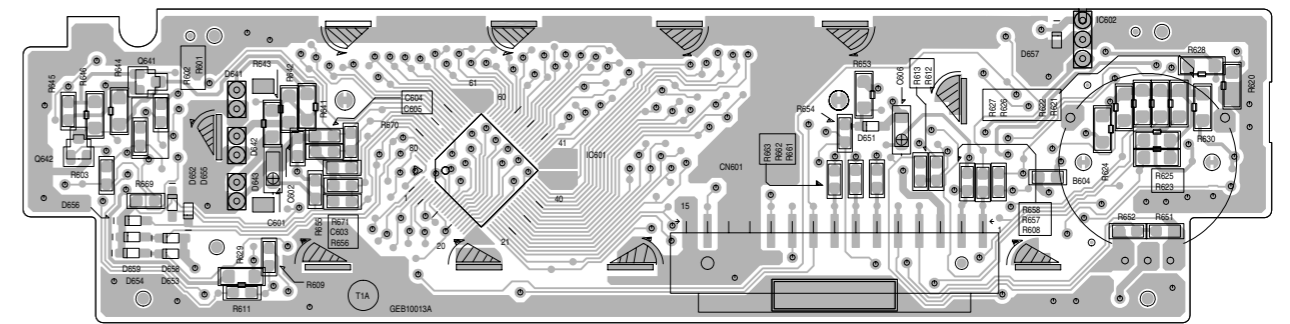
3

2

1



■ Front board
(Reverse side)



A

B

C

D

E

F

G